

SAINT MARY-OF-THE-WOODS
COLLEGE

WOODS ONLINE
SCHOLARSHIPS



The College is accredited by the
Higher Learning Commission.

SAINT MARY-OF-THE-WOODS COLLEGE
Office of Financial Aid

(812-535-5100 • finaid@smwc.edu)

1 St Mary of Woods Coll
Saint Mary of the Woods, IN 47876

www.smwc.edu/online

ASPIRE HIGHER
www.smwc.edu/online

WOODS ONLINE

Saint Mary-of-the-Woods College (SMWC) is investing in your education. Over 82 percent of Woods Online students receive some form of financial aid.

At The Woods, you'll have the freedom to think for yourself. We don't tell you *what* to think, but *how* to think. As a liberal arts college, you'll not only be challenged to excel academically, but you'll be empowered to lead others with confidence, integrity and intelligence.

Whether you are beginning your bachelor's degree or transferring up to 90 credit hours, we have a scholarship to help you aspire higher at SMWC and in life.

TRANSFER STUDENTS

SMWC Transfer scholarship

- \$2,000/year towards the cost of tuition only.

SMWC Legacy Grant

- \$1,000/year towards the cost of tuition.

Military Veterans Grant

- Special tuition rate of \$250 per credit hour for military service members or spouse.

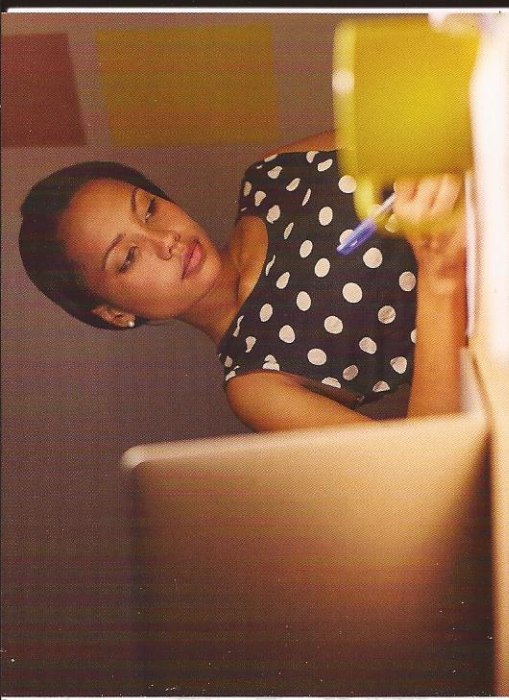
Healthcare Partner Grant (RN to BSN students)

- Special tuition rate of \$297 per credit hour for employees of our healthcare partners.

SMWC Teach

- Up to \$2,000/year towards the cost of tuition only for students participating in the Indiana Early Childhood Education program.

ASPIRE HIGHER



FIRST TIME STUDENT

SMWC Woods Online Scholarship

- \$2,000/year towards the cost of tuition only.

SMWC Legacy Grant

- \$1,000/year towards the cost of tuition.

Military Veterans Grant

- Special tuition rate of \$250 per credit hour for military service members or spouse.

Healthcare Partner Grant (RN to BSN students)

- Special tuition rate of \$297 per credit hour for employees of our healthcare partners.

SMWC Teach

- Up to \$2,000/year towards the cost of tuition only for students participating in the Indiana Early Childhood Education program.

Students must meet scholarship requirements to receive and renew the award. All awards are subject to change and certain awards cannot be combined with other offers.

For full scholarship details and application requirements, visit www.smwc.edu/online.

WWW.SMWC.EDU/ONLINE